

Building A Stronger, Smarter Workforce for the 21st Century and Beyond

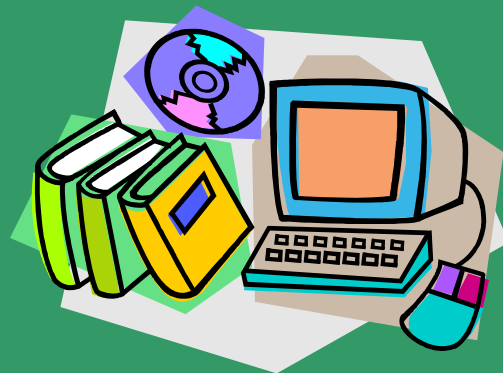


Microsoft Student Select

Nebraska ESU Cooperative is excited about the great potential of this program. By equipping K-12 learners with the most advanced productivity tools today will help to build a stronger, smarter workforce for the 21st century and beyond.

Log onto <http://nebraskak12.e-academy.com>

•Office Standard Edition for Windows	\$66.65
•Office Professional for Windows	\$77.05
•Office Enterprise Edition	\$93.35
•Office 2004 Professional for Mac	\$75.20
•Office 2004 for Macintosh	\$65.10
•Office SharePoint Designer	\$60.70
•OneNote 2007 for Windows	\$31.10
•Project Pro 2007 for Windows	\$119.75
•Visio Pro 2007 for Windows	\$76.65
•Windows Vista Business Upgrade	\$78.55



How it Works

1) Register as a Member

Because the offers in this website are limited to current students, faculty and staff of the Nebraska ESU Schools you are first required to register.

You may register by contacting your school for registration which you will need to log in to <http://nebraskak12.e-academy.com> to order.

2) Select Software

Click on the "SOFTWARE" button at the top of the page. Browse the website to find the software product you are looking for.

When you find the product you want, click on "ADD TO CART". You can click on "CONTINUE SHOPPING" to purchase additional products or "CHECKOUT" to proceed to the Make Payment stage.

3) Make Payment

You will need a valid VISA® or MasterCard® to make your purchase. For your safety, we require the full name and address of the cardholder for verification.

We will send you an email confirming your purchase and this serves as your receipt. Shopping is 100% secure. Guaranteed.

4) Install Software

When you receive your CD Media, installation instructions are provided. The installation is your responsibility, not the responsibility of the school district.